

UC Irvine-led team uncovers 'vigorous melting' at Antarctica's Thwaites Glacier

Satellite radar data show kilometer-scale seawater intrusion, causing ice to rise and fall.

Monday, May 20, 2024

Brian Bell

UCI News



A team led by glaciologists at UC Irvine used satellite radar data to reconstruct the impact of warm ocean water surging in a grounding zone extending several kilometers beneath Thwaites Glacier in West Antarctica. The research, the subject of a paper published in PNAS, will help climate modelers derive more precise projections of sea level rise resulting from the melting of ocean-terminating glaciers around the world.

Picture Credit:

NASA

Irvine, Calif., May 20, 2024 — A team of glaciologists led by researchers at the University of California, Irvine used high-resolution satellite radar data to find evidence of the intrusion of warm, high-pressure seawater many kilometers beneath the grounded ice of West Antarctica's Thwaites Glacier.

In a study published today in [Proceedings of the National Academy of Sciences](#), the UC Irvine-led team said that widespread contact between ocean water and the glacier – a process that is replicated throughout Antarctica and in Greenland – causes “vigorous melting” and may require a reassessment of global sea level rise projections.

The glaciologists relied on data gathered from March to June of 2023 by Finland's [ICEYE](#) commercial satellite mission. The ICEYE satellites form a “constellation” in polar orbit around the planet, using InSAR – interferometer synthetic aperture radar – to persistently monitor changes on the Earth's surface. Many passes by a spacecraft over a small, defined area render smooth data results. In the case of this study, it showed the rise, fall and bending of Thwaites Glacier.

“These ICEYE data provided a long-time series of daily observations closely conforming to tidal cycles,” said lead author Eric Rignot, UC Irvine professor of Earth system science. “In the past, we had some sporadically available data, and with just those few observations it was hard to figure out what was happening. When we have a continuous time series and compare that with the tidal cycle, we see the seawater coming in at high tide and receding and sometimes going farther up underneath the glacier and getting trapped. Thanks to ICEYE, we're beginning to witness this tidal dynamic for the first time.”

ICEYE Director of Analytics Michael Wollersheim, co-author, said, “Until now, some of the most dynamic processes in nature have been impossible to observe with sufficient detail or frequency to allow us to understand and model them. Observing these processes from space and using radar satellite images, which provide centimeter-level precision InSAR measurements at daily frequency, marks a significant leap forward.”

Rignot said the project helped him and his colleagues develop a better understanding of the behavior of seawater on undersides of Thwaites Glacier. He said that seawater coming in at the base of the ice sheet, combined with freshwater

generated by geothermal flux and friction, builds up and “has to flow somewhere.” Water is distributed through natural conduits or collects in cavities, creating enough pressure to elevate the ice sheet.

“There are places where the water is almost at the pressure of the overlying ice, so just a little more pressure is needed to push up the ice,” Rignot said. “The water is then squeezed enough to jack up a column of more than half a mile of ice.”

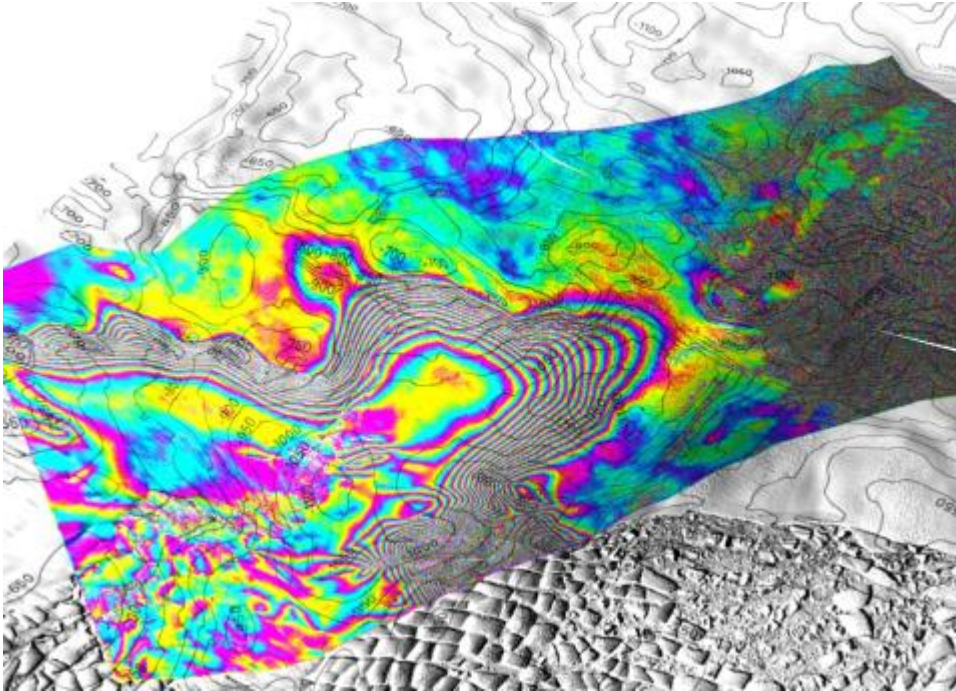
And it’s not just any seawater. For decades, Rignot and his colleagues have been gathering evidence of the impact of climate change on ocean currents, which push warmer seawater to the shores of Antarctica and other polar ice regions.

Circumpolar deep water is salty and has a lower freezing point. While freshwater freezes at zero degrees Celsius, saltwater freezes at minus two degrees, and that small difference is enough to contribute to the “vigorous melting” of basal ice as found in the study.

Co-author Christine Dow, professor in the Faculty of Environment at the University of Waterloo in Ontario, Canada, said, “Thwaites is the most unstable place in the Antarctic and contains the equivalent of 60 centimeters of sea level rise. The worry is that we are underestimating the speed that the glacier is changing, which would be devastating for coastal communities around the world.”

Rignot said that he hopes and expects the results of this project to spur further research on the conditions beneath Antarctic glaciers, exhibitions involving autonomous robots and more satellite observations.

Image



This screen capture illustrates the tidal motion of Thwaites Glacier in West Antarctica recorded by ICEYE satellite synthetic aperture radar on May 11-13, 2023. Data gathered in this study, the subject of a new paper in PNAS, shows that flexing of ice varies by kilometers over the tidal cycle, indicating that the pressurized seawater that intrudes beneath grounded ice produces vigorous heat exchange with the glacier base. ICEYE

“There is a lot of enthusiasm from the scientific community to go to these remote, polar regions to gather data and build our understanding of what’s happening, but the funding is lagging,” he said. “We operate at the same budget in 2024 in real dollars that we were in the 1990s. We need to grow the community of glaciologists and physical oceanographers to address these observation issues sooner rather than later, but right now we’re still climbing Mount Everest in tennis shoes.”

In the near term, Rignot, who is also a senior project scientist at NASA’s Jet Propulsion Laboratory, said this study will provide a lasting benefit to the ice sheet modeling community.

“If we put this type of ocean-ice interaction into ice sheet models, I expect we will be able to do a much better job of reproducing what has happened in the past quarter century, which will lead to a higher level of confidence in our projections,” he said. “If we could add this process we outlined in the paper, which is not included in most current models, the model reconstructions should match observations much better. It would be a big win if we could achieve that.”

Dow added, “At the moment we don’t have enough information to say one way or the other how much time there is before the oceanwater intrusion is irreversible. By improving the models and focusing our research on these critical glaciers, we will try to get these numbers at least pinned down for decades versus centuries. This work will help people adapt to changing ocean levels, along with focusing on reducing carbon emissions to prevent the worst-case scenario.”

Rignot, Dow and Wollershiem were joined in this project by Enrico Ciraci, UC Irvine assistant specialist in Earth system science and NASA postdoctoral fellow; Bernd Scheuchl, UC Irvine researcher in Earth system science; and ICEYE’s Valentyn Tolpekin. ICEYE is headquartered in Finland and operates from five international locations, including the United States. The research received financial support from NASA and the National Science Foundation.

UCI’s Brilliant Future campaign: Publicly launched on Oct. 4, 2019, the Brilliant Future campaign aims to raise awareness and support for the university. By engaging 75,000 alumni and garnering \$2 billion in philanthropic investment, UCI seeks to reach new heights of excellence in student success, health and wellness, research and more. The School of Physical Sciences plays a vital role in the success of the campaign. Learn more by visiting <https://brilliantfuture.uci.edu/uci-school-of-physical-sciences/>.

About the University of California, Irvine: Founded in 1965, UCI is a member of the prestigious Association of American Universities and is ranked among the nation’s top 10 public universities by U.S. News & World Report. The campus has produced five Nobel laureates and is known for its academic achievement, premier research, innovation and anteater mascot. Led by Chancellor Howard Gillman, UCI has more than 36,000 students and offers 224 degree programs. It’s located in one of the world’s safest and most economically vibrant communities and is Orange County’s second-largest employer, contributing \$7 billion annually to the local economy and \$8 billion statewide. For more on UCI, visit www.uci.edu.

Media access: Radio programs/stations may, for a fee, use an on-campus ISDN line to interview UCI faculty and experts, subject to availability and university approval. For more UCI news, visit news.uci.edu. Additional resources for journalists may be found at <https://news.uci.edu/media-resources/>.

[UCI News](#)

[Press Releases](#)

[News Briefs](#)

[Climate Change](#)

[The Future of Energy and the Environment](#)

[Earth System Science](#)

[View PDF](#)